

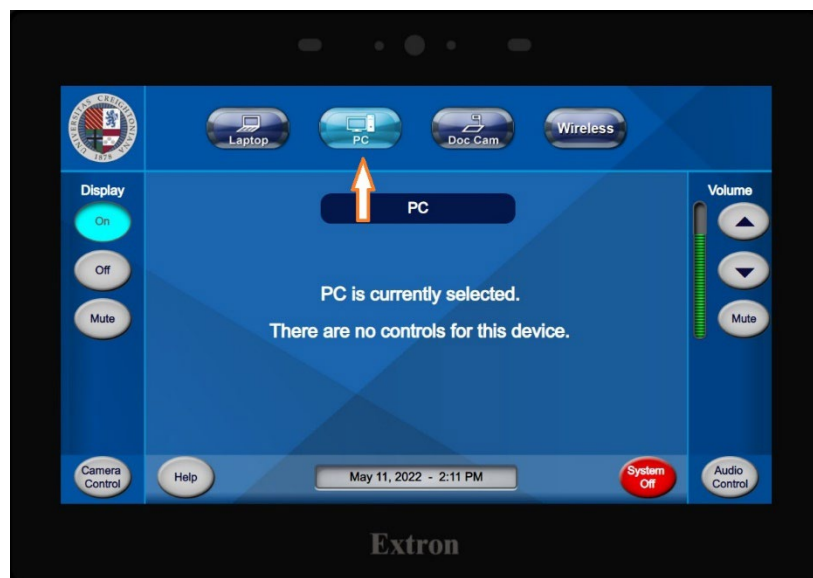
Extron TLP Series Controller

*Note: This device layout may vary depending on location.

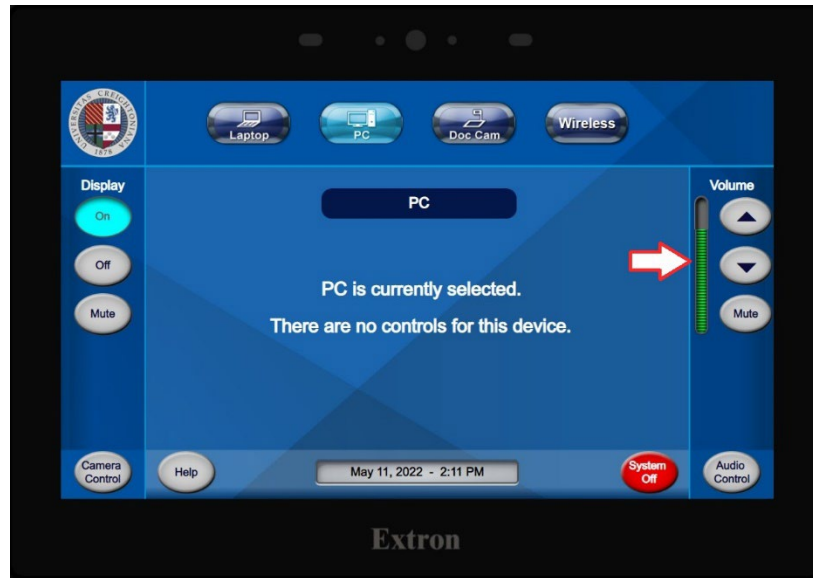
1. To begin a classroom session:
Press the center button to turn on the display (**Press here to begin**). The projector will take approximately two minutes to power on.



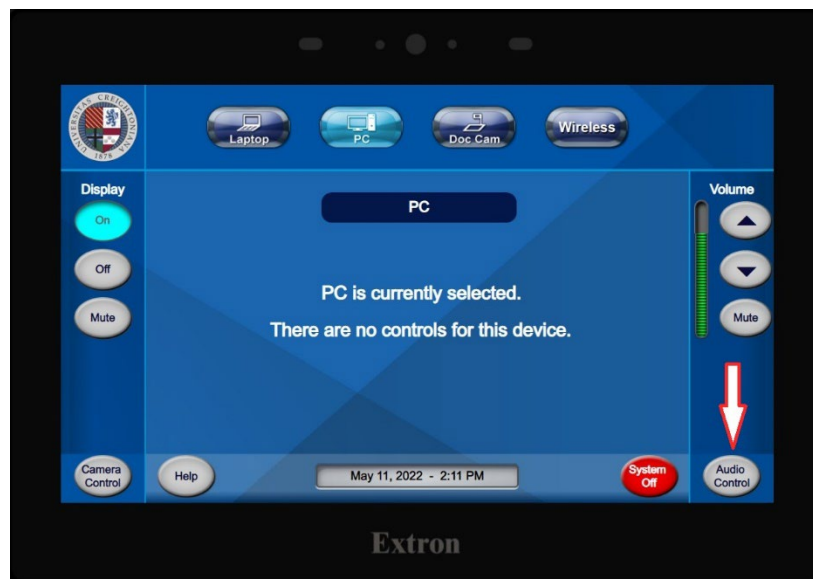
2. Next select a source by pressing one of the four buttons on the top. It will appear on the projector screen and any available monitors. The **Wireless** button refers to a Solstice Pod for connecting a personal device. Please refer to <https://doit.creighton.edu/solstice> for further instructions on the Solstice Pod.



3. The volume buttons located on the right, control the volume of the device (up and down arrows) when selected. Audio may also be muted using the **Mute** button.

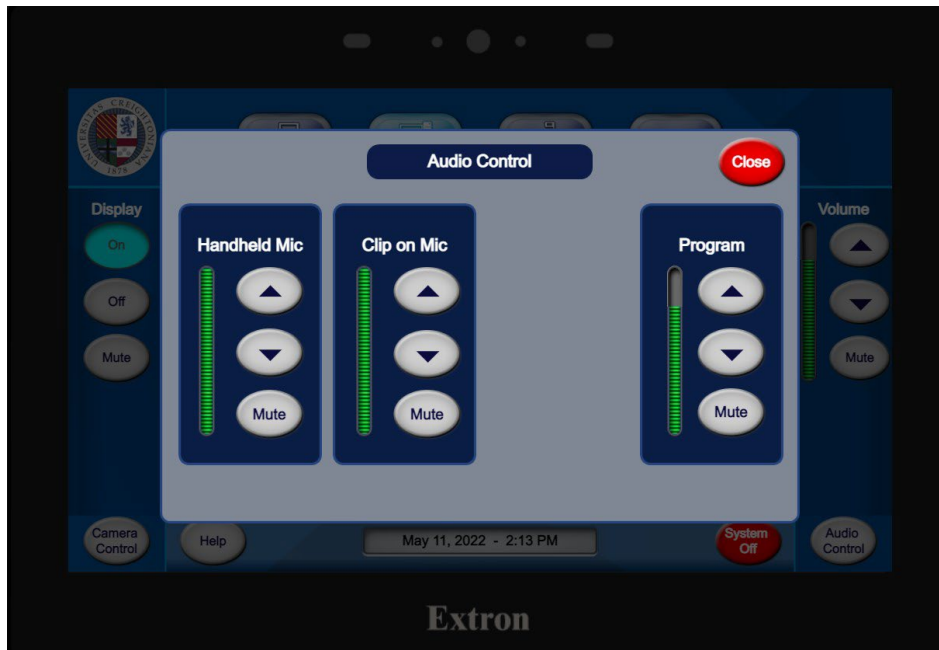


4. Access the microphone controls by pressing **Audio Control** on the lower right. This will open a pop-up menu as shown.

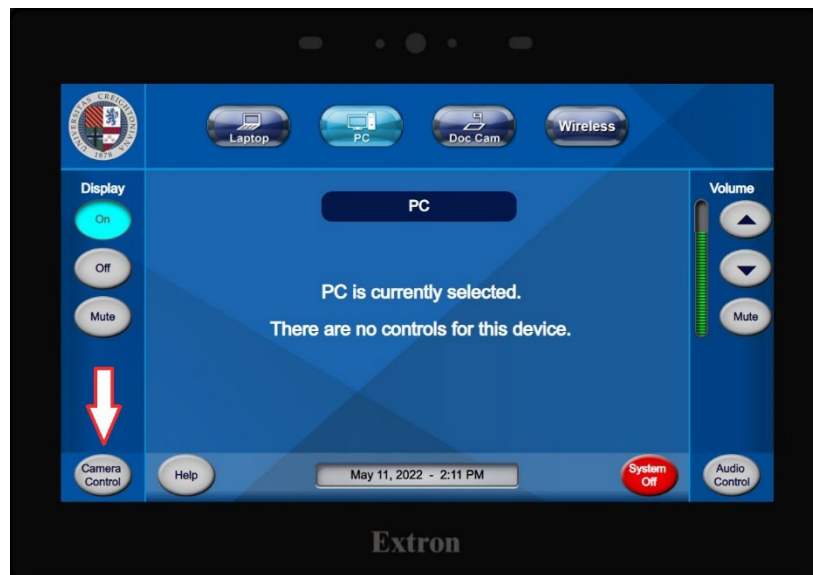


This example has two microphones. The handheld and clip on microphone volumes may be adjusted up, down or muted. The program buttons on the right side control the volume on the selected source on the main menu. Press **Close**

when the audio is adjusted appropriately, and you will be returned to the main menu.



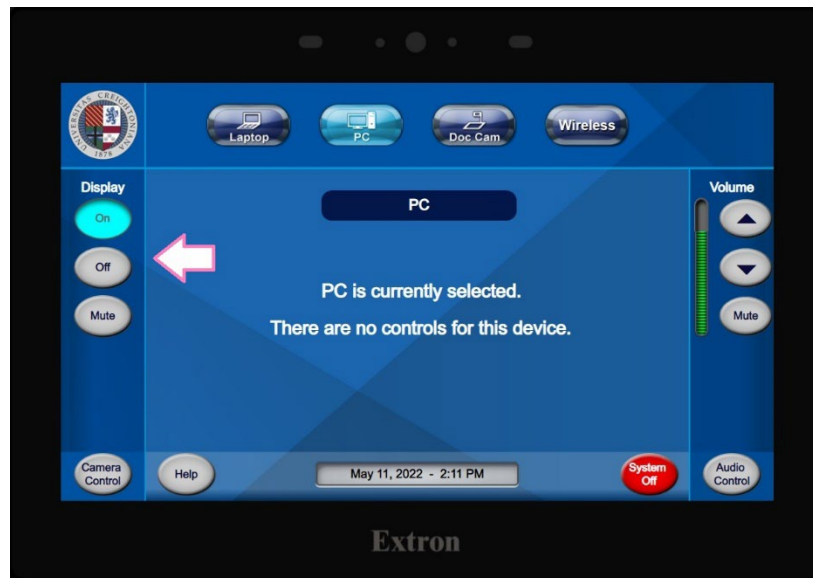
- Any room cameras may be adjusted by pressing **Camera Control**. It will open another popup window.



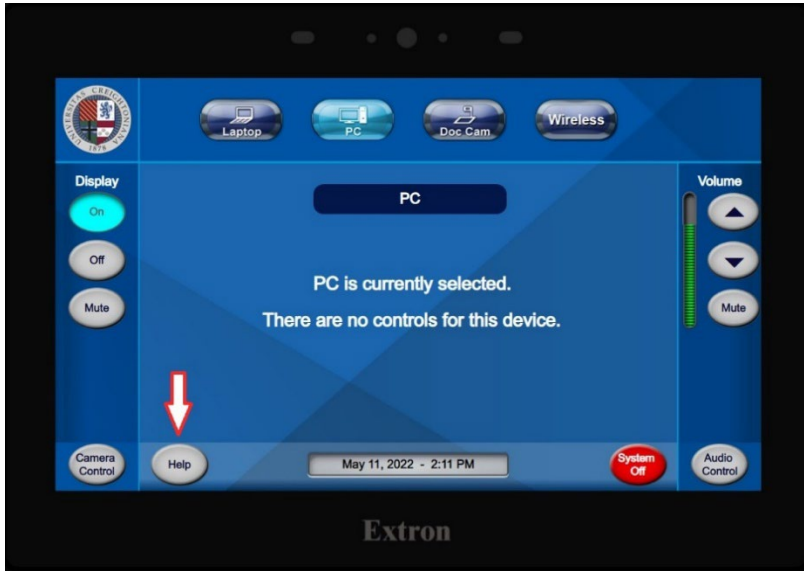
- The camera can be adjusted to the proper position here. Four presets may also be saved if needed. Press **Close** to return to the main menu after adjustment.



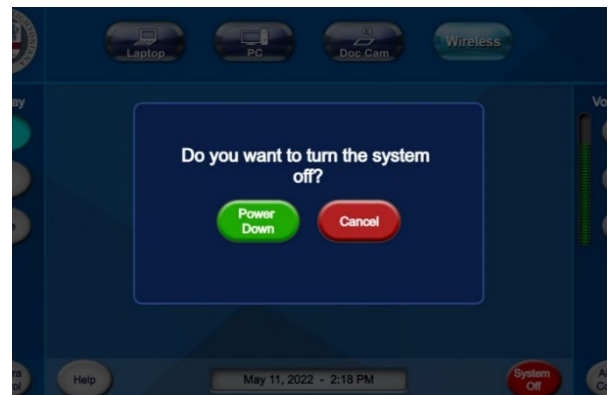
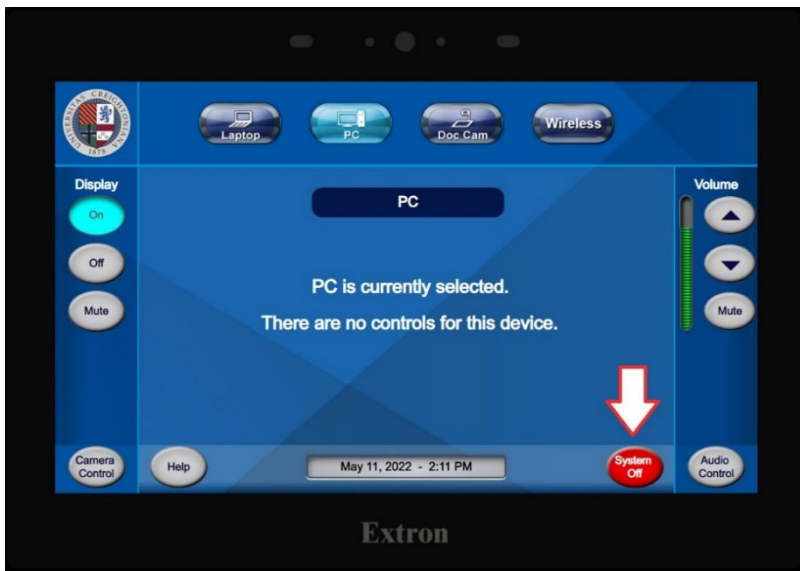
7. Display will control the main monitor or projector in the room. It may be turned on, off or muted.



8. Pressing **Help** will open another popup screen with contact information for further assistance. Press **Close** to return to the main menu.



9. Pressing the System **Off** button will produce a confirmation page. Press **Cancel** if the system is to remain on or **Power Down** to continue turning off the system. **Please power off the system when finished with your session.**



Connecting a Personal Device

A laptop or other personal device may be connected into the system. To do this, press the **HDMI** button. Locate the HDMI cable with adapters located on the podium. The adapter used will vary depending on your device.



This example uses the USB-C adapter.

If the basic HDMI adapter is needed, remove the adapter as demonstrated below.

